

2012 Calendar



Happy Christmas and all good wishes for the new year!

This calendar contains thirteen of my photographs; some of them taken in the Red Sea during 2011, others during earlier trips to Bali and to the South China Sea.

The cover picture is of a red lionfish (*Pterois volitans*: 30 cms.) in Balinese waters. It shows the striking pattern exhibited by its fully extended fan-like pectoral fins, attached to which are venomous spines.

And now for something really serious! It is an appalling fact that the world's oceans, seas, lakes and rivers are facing severe crises, with their inhabitants being cruelly, shamefully and foolishly exploited. As a result of rapidly increasing over-fishing and pollution, particularly during the last thirty years, many species are in decline and some are approaching extinction. The situation is clearly morally wrong and, one should add for those who feel that moral considerations are not so important, economically unsustainable.

The plight of fish is particularly dire. There are over 28,000 species known to science but, sadly, they are accorded scant respect and protection. Unlike marine mammals and birds, for example, they do not have a plurality of societies dedicated to their welfare. Ignorance is the reason. It takes many forms, such as the view that fish do not feel pain. What nonsense: of course they do! Equally ludicrous is the belief amongst some vegetarians that eating fish is not eating meat. Space precludes me from expanding on the catastrophe facing the underwater environment, which covers 70% of our planet and on which all life depends. The internet is a good source of the relevant facts.

If you would like to see more of my images, just "google" piclib@nhm.ac.uk and enter "Terry Dormer" in the search box.

2012 Year Planner



January

S	M	T	W	T	F	S
1	2	3	4	5	6	7
8	9	10	11	12	13	14
15	16	17	18	19	20	21
22	23	24	25	26	27	28
29	30	31				



February

S	M	T	W	T	F	S
			1	2	3	4
5	6	7	8	9	10	11
12	13	14	15	16	17	18
19	20	21	22	23	24	25
26	27	28	29			



March

S	M	T	W	T	F	S
			1	2	3	
4	5	6	7	8	9	10
11	12	13	14	15	16	17
18	19	20	21	22	23	24
25	26	27	28	29	30	31



April

S	M	T	W	T	F	S
1	2	3	4	5	6	7
8	9	10	11	12	13	14
15	16	17	18	19	20	21
22	23	24	25	26	27	28
29	30					



May

S	M	T	W	T	F	S
		1	2	3	4	5
6	7	8	9	10	11	12
13	14	15	16	17	18	19
20	21	22	23	24	25	26
27	28	29	30	31		



June

S	M	T	W	T	F	S
				1	2	
3	4	5	6	7	8	9
10	11	12	13	14	15	16
17	18	19	20	21	22	23
24	25	26	27	28	29	30



July

S	M	T	W	T	F	S
1	2	3	4	5	6	7
8	9	10	11	12	13	14
15	16	17	18	19	20	21
22	23	24	25	26	27	28
29	30	31				



August

S	M	T	W	T	F	S
			1	2	3	4
5	6	7	8	9	10	11
12	13	14	15	16	17	18
19	20	21	22	23	24	25
26	27	28	29	30	31	



September

S	M	T	W	T	F	S
30						1
2	3	4	5	6	7	8
9	10	11	12	13	14	15
16	17	18	19	20	21	22
23	24	25	26	27	28	29



October

S	M	T	W	T	F	S
	1	2	3	4	5	6
7	8	9	10	11	12	13
14	15	16	17	18	19	20
21	22	23	24	25	26	27
28	29	30	31			



November

S	M	T	W	T	F	S
			1	2	3	
4	5	6	7	8	9	10
11	12	13	14	15	16	17
18	19	20	21	22	23	24
25	26	27	28	29	30	



December

S	M	T	W	T	F	S
30	31					1
2	3	4	5	6	7	8
9	10	11	12	13	14	15
16	17	18	19	20	21	22
23	24	25	26	27	28	29



The blue ring angelfish (*Pomacanthus annularis*: 35cms.) is named because of the ring above its gill cover. It is, I feel, one of the most beautiful of reef fish. It feeds on a variety of animals, including coral polyps, shellfish, shrimps and sponges. Many individuals are captured for the aquarium trade, which contributes to falling numbers in their natural environment. Balinese waters.

January 2012

1	Sunday	17	Tuesday
2	Monday	18	Wednesday
3	Tuesday	19	Thursday
4	Wednesday	20	Friday
5	Thursday	21	Saturday
6	Friday	22	Sunday
7	Saturday	23	Monday
8	Sunday	24	Tuesday
9	Monday	25	Wednesday
10	Tuesday	26	Thursday
11	Wednesday	27	Friday
12	Thursday	28	Saturday
13	Friday	29	Sunday
14	Saturday	30	Monday
15	Sunday	31	Tuesday
16	Monday		



The long-tentacle anemone (*Macrodactyla dorensis*: 30 cms.) is regarded as one of the most beautifully coloured and physically arrayed of the actinarians. It lives generally on sandy areas and feeds on small animals in the current, immobilizing its prey with the aid of specialist stinging cells called nematocysts. Balinese waters.

February 2012

1	Wednesday
2	Thursday
3	Friday
4	Saturday
5	Sunday
6	Monday
7	Tuesday
8	Wednesday
9	Thursday
10	Friday
11	Saturday
12	Sunday
13	Monday
14	Tuesday
15	Wednesday
16	Thursday

17	Friday
18	Saturday
19	Sunday
20	Monday
21	Tuesday
22	Wednesday
23	Thursday
24	Friday
25	Saturday
26	Sunday
27	Monday
28	Tuesday
29	Wednesday



This shoal of pinecone soldierfish (*Myripristis murdjan*: 20 cms.) was sheltering in a much broken wreck. The species is pink with small scales and white leading edges to the median fins and is usually found in crevices and caves. At the top left and bottom left, respectively, are a single and a pair of cardinalfish (*Cheilodipterus macrodon*) with their characteristic dark coloured base and bright white stripes. Egyptian Red Sea.

March 2012

1	Thursday	17	Saturday
2	Friday	18	Sunday
3	Saturday	19	Monday
4	Sunday	20	Tuesday
5	Monday	21	Wednesday
6	Tuesday	22	Thursday
7	Wednesday	23	Friday
8	Thursday	24	Saturday
9	Friday	25	Sunday
10	Saturday	26	Monday
11	Sunday	27	Tuesday
12	Monday	28	Wednesday
13	Tuesday	29	Thursday
14	Wednesday	30	Friday
15	Thursday	31	Saturday
16	Friday		



On a sloping reef, I came across this sea star (*Fromia ghardaqana*: 8 cms.) beside a soft coral (*Dendronephthya hembrichi*). This species of sea star is fairly common; it feeds on detritus and small invertebrates. The soft coral is fully extended and its many polyps are feeding on plankton carried in the current. To assist it to remain upright, it pumps its communal body full of water, with further support being provided by calcareous spines. Egyptian Red Sea.

April 2012

1	Sunday	17	Tuesday
2	Monday	18	Wednesday
3	Tuesday	19	Thursday
4	Wednesday	20	Friday
5	Thursday	21	Saturday
6	Friday	22	Sunday
7	Saturday	23	Monday
8	Sunday	24	Tuesday
9	Monday	25	Wednesday
10	Tuesday	26	Thursday
11	Wednesday	27	Friday
12	Thursday	28	Saturday
13	Friday	29	Sunday
14	Saturday	30	Monday
15	Sunday		
16	Monday		



I felt fortunate to encounter this unusually large shoal of circular batfish (*Platax orbicularis*: 40 cms.), lit by rays of light from the late afternoon sun. The species feeds on algae, invertebrates and small reef fish. Distinctive traits are the two dark bands, one through the eye and the other just behind the head, and the shape of the fan-shaped tail, which is taller than it is long. Egyptian Red Sea.

May 2012

1	Tuesday	17	Thursday
2	Wednesday	18	Friday
3	Thursday	19	Saturday
4	Friday	20	Sunday
5	Saturday	21	Monday
6	Sunday	22	Tuesday
7	Monday	23	Wednesday
8	Tuesday	24	Thursday
9	Wednesday	25	Friday
10	Thursday	26	Saturday
11	Friday	27	Sunday
12	Saturday	28	Monday
13	Sunday	29	Tuesday
14	Monday	30	Wednesday
15	Tuesday	31	Thursday
16	Wednesday		



The pyjama nudibranch (*Chromodoris quadricolor*: 25 mms.) is feeding on a fire sponge (*Latrunculia magnifica*). The common name "pyjama" is because of the species' striped bands of colour, which serve as a warning to predators that it contains noxious chemicals. The sponge also discourages animals from eating it by producing a toxin (latruculin A), to which the nudibranch is immune. Egyptian Red Sea.

June 2012

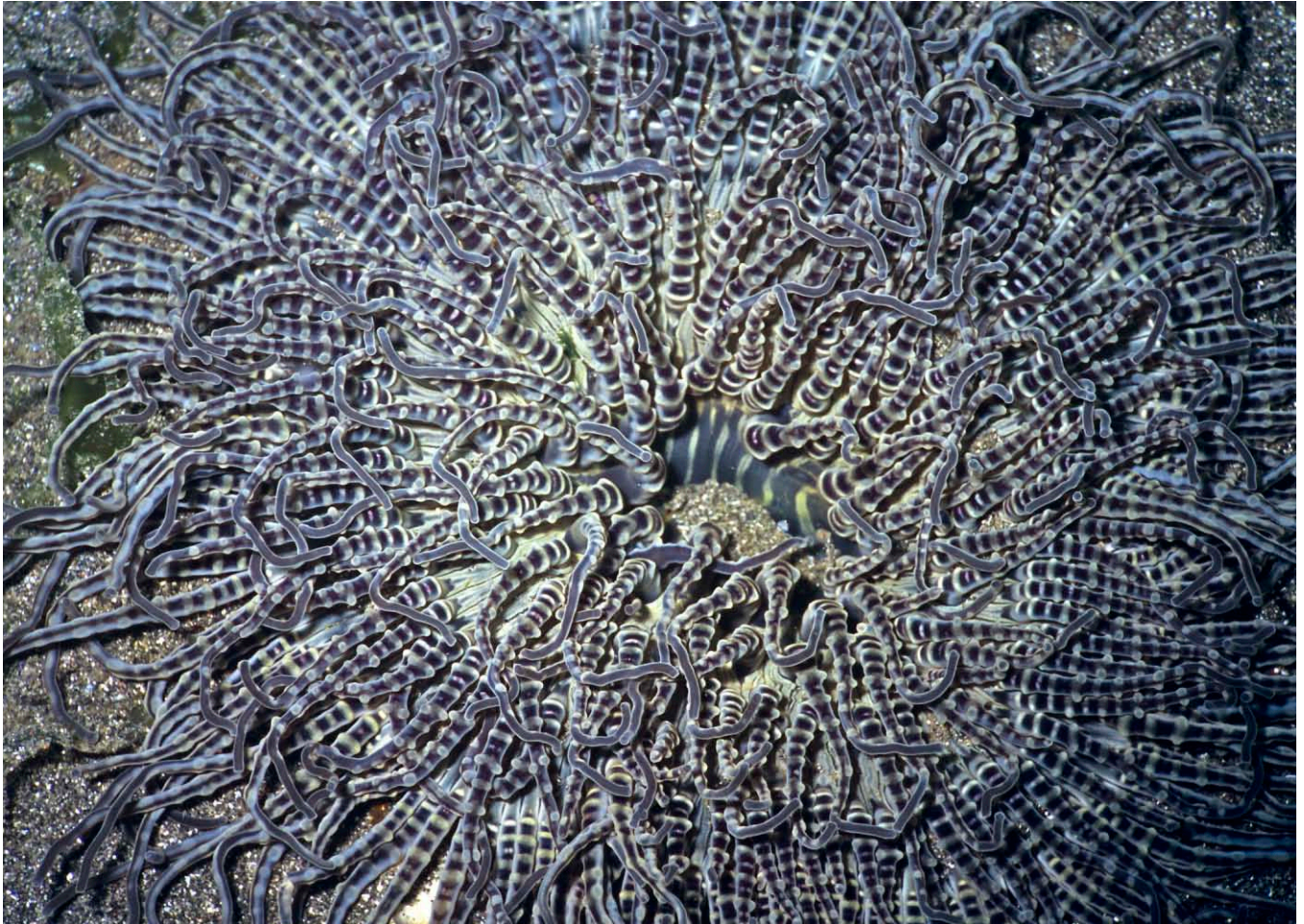
1	Friday	17	Sunday
2	Saturday	18	Monday
3	Sunday	19	Tuesday
4	Monday	20	Wednesday
5	Tuesday	21	Thursday
6	Wednesday	22	Friday
7	Thursday	23	Saturday
8	Friday	24	Sunday
9	Saturday	25	Monday
10	Sunday	26	Tuesday
11	Monday	27	Wednesday
12	Tuesday	28	Thursday
13	Wednesday	29	Friday
14	Thursday	30	Saturday
15	Friday		
16	Saturday		



On the right, a triton triggerfish (*Balistoides viridescens*: 60 cms.) is swimming and on the left *Zanclus comutus*, the “politically incorrect” common name of which is moorish idol, the Moors of Africa purportedly believing that it was a harbinger of happiness. The triggerfish is often seen turning over small pieces of coral in search of food. When nesting, the female will attack divers who approach too closely. Egyptian Red Sea.

July 2012

1	Sunday	17	Tuesday
2	Monday	18	Wednesday
3	Tuesday	19	Thursday
4	Wednesday	20	Friday
5	Thursday	21	Saturday
6	Friday	22	Sunday
7	Saturday	23	Monday
8	Sunday	24	Tuesday
9	Monday	25	Wednesday
10	Tuesday	26	Thursday
11	Wednesday	27	Friday
12	Thursday	28	Saturday
13	Friday	29	Sunday
14	Saturday	30	Monday
15	Sunday	31	Tuesday
16	Monday		



The beaded anemone (*Heteractis aurora*: 40 cms.) is, like the anemone shown for February, found on sandy areas. It too feeds on small prey carried in the current. It can be identified easily by the beaded nature of its relatively short tentacles, which in this instance form a striking pattern. Notable also are the lines on the oral disc which travel towards the centrally located mouth. Balinese waters.

August 2012

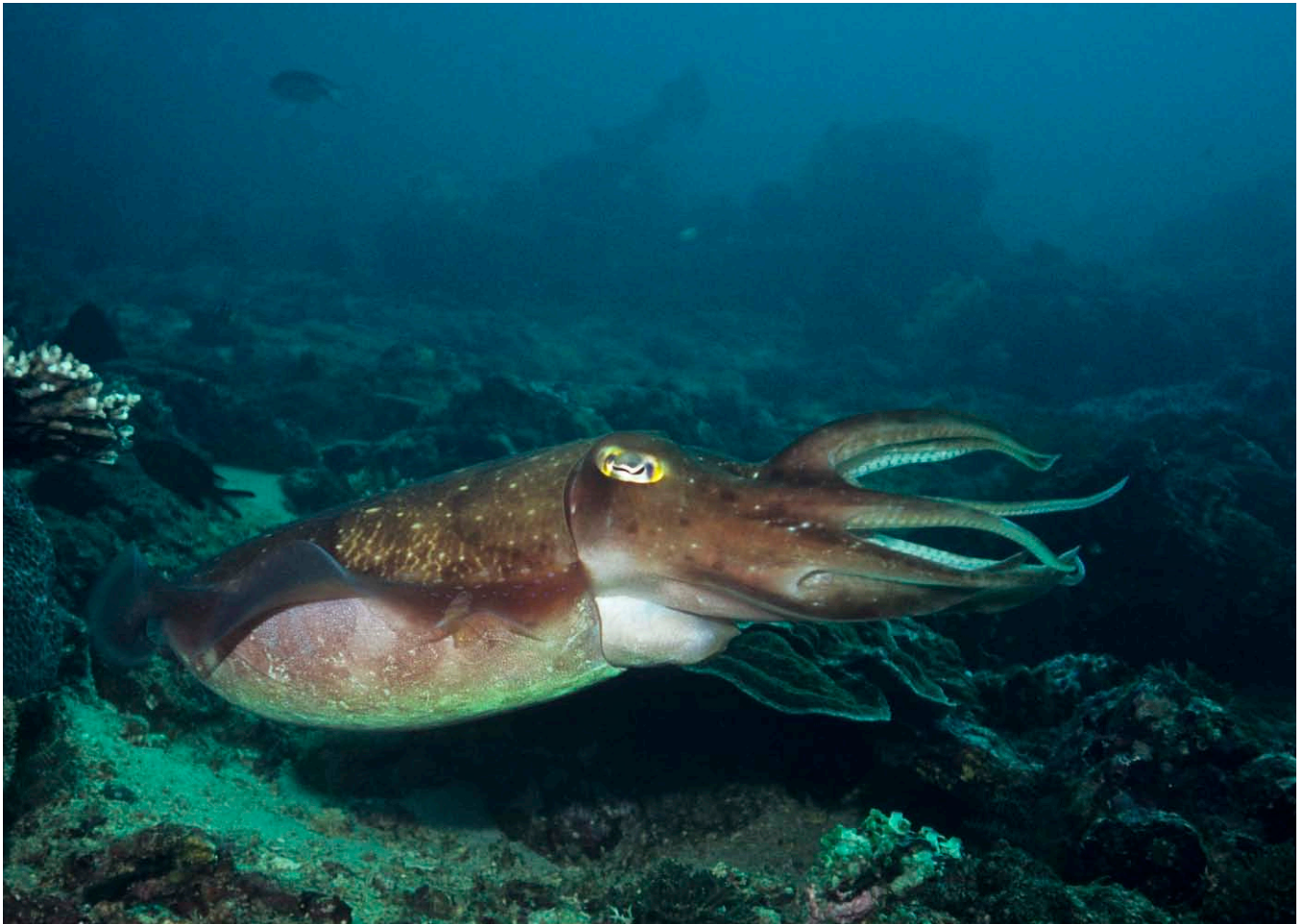
1	Wednesday	17	Friday
2	Thursday	18	Saturday
3	Friday	19	Sunday
4	Saturday	20	Monday
5	Sunday	21	Tuesday
6	Monday	22	Wednesday
7	Tuesday	23	Thursday
8	Wednesday	24	Friday
9	Thursday	25	Saturday
10	Friday	26	Sunday
11	Saturday	27	Monday
12	Sunday	28	Tuesday
13	Monday	29	Wednesday
14	Tuesday	30	Thursday
15	Wednesday	31	Friday
16	Thursday		



I was in the middle of this shoal of humphead parrotfish (*Bolbometopon muricatum*: 100 cms.) as it trundled past me; the marine equivalent, I felt, of a herd of buffalo. This is the largest species of parrotfish. It uses its fused beak-like front teeth to bite off chunks of hard coral: some reports indicate that it also breaks off portions of reef by "head-butting". Layang Layang, South China Sea.

September 2012

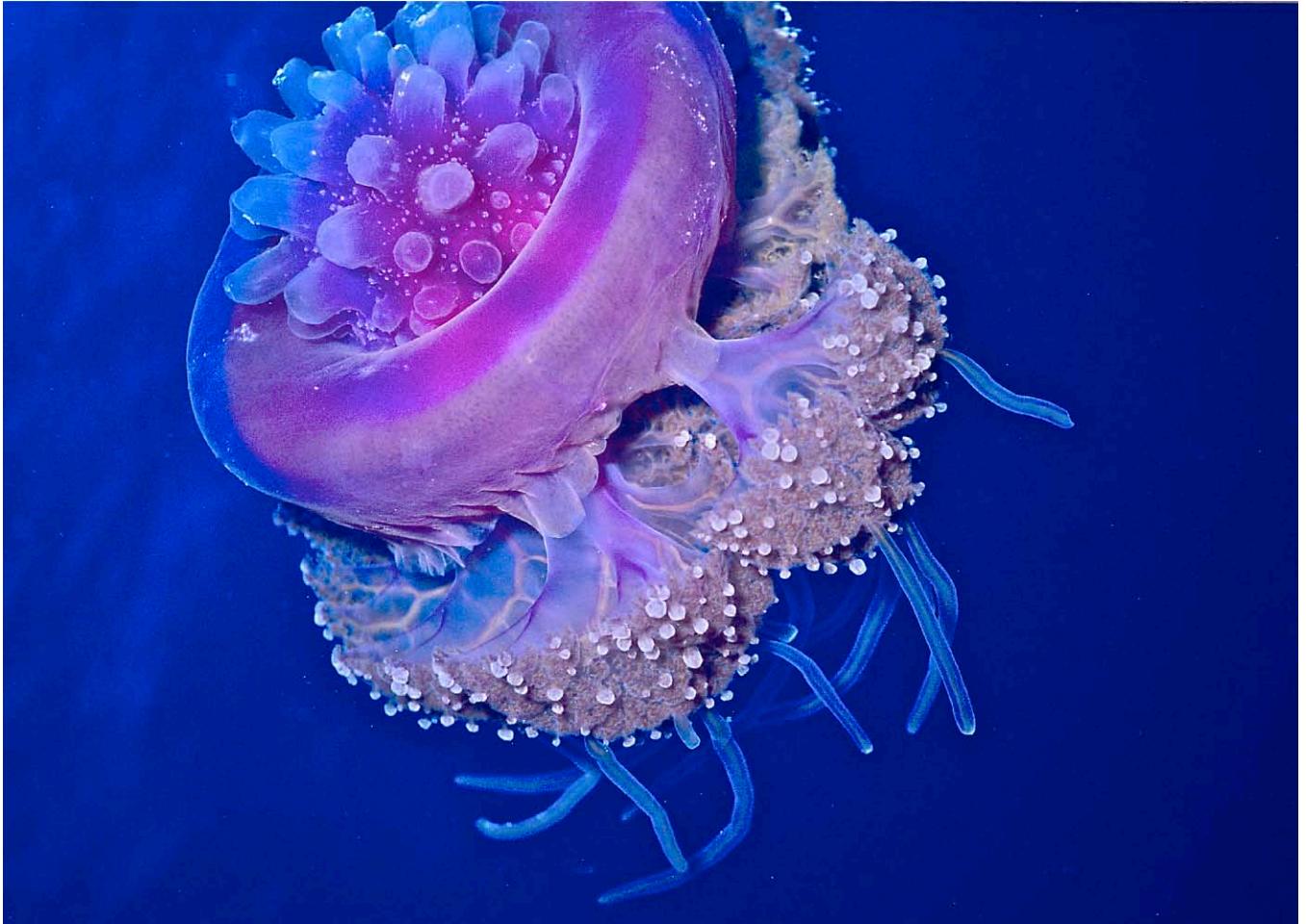
1	Saturday	17	Monday
2	Sunday	18	Tuesday
3	Monday	19	Wednesday
4	Tuesday	20	Thursday
5	Wednesday	21	Friday
6	Thursday	22	Saturday
7	Friday	23	Sunday
8	Saturday	24	Monday
9	Sunday	25	Tuesday
10	Monday	26	Wednesday
11	Tuesday	27	Thursday
12	Wednesday	28	Friday
13	Thursday	29	Saturday
14	Friday	30	Sunday
15	Saturday		
16	Sunday		



This hooded cuttlefish (*Sepia latimanus*: 45 cms.) was hunting in the late afternoon twilight. Like all cephalopods, the species is remarkably intelligent. It displays a range of colours and textures, in this typical case brown and smooth with white mottled markings and yellow around the margins of the eyes. It preys mainly on shrimps and other small crustaceans, which some reports indicate are mesmerized when it pulsates rhythmically with bands of colour. Balinese waters.

October 2012

1	Monday	17	Wednesday
2	Tuesday	18	Thursday
3	Wednesday	19	Friday
4	Thursday	20	Saturday
5	Friday	21	Sunday
6	Saturday	22	Monday
7	Sunday	23	Tuesday
8	Monday	24	Wednesday
9	Tuesday	25	Thursday
10	Wednesday	26	Friday
11	Thursday	27	Saturday
12	Friday	28	Sunday
13	Saturday	29	Monday
14	Sunday	30	Tuesday
15	Monday	31	Wednesday
16	Tuesday		



The crown jellyfish (*Nerostoma setouchianum*: 30 cms.) has a deep groove running around the umbrella, which results in the crown shape from which its common name is derived. The swimming bell has many small lobes on top and stinging tentacles underneath. At dusk, it rises from the depths to feed on small organisms in shallower waters. Egyptian Red Sea.

November 2012

1	Thursday	17	Saturday
2	Friday	18	Sunday
3	Saturday	19	Monday
4	Sunday	20	Tuesday
5	Monday	21	Wednesday
6	Tuesday	22	Thursday
7	Wednesday	23	Friday
8	Thursday	24	Saturday
9	Friday	25	Sunday
10	Saturday	26	Monday
11	Sunday	27	Tuesday
12	Monday	28	Wednesday
13	Tuesday	29	Thursday
14	Wednesday	30	Friday
15	Thursday		
16	Friday		



The yellow-ribbon sweetlips (*Plectorhinchus polytaenia*: 40 cms.) gets its common name from its large lips. During the day, it shelters generally in reef crevices, emerging at night to feed on crustaceans, molluscs and worms. It is photographed here next to a colourful reef which is covered in featherstars, corals and sponges. Balinese waters.

December 2012

1	Saturday	17	Monday
2	Sunday	18	Tuesday
3	Monday	19	Wednesday
4	Tuesday	20	Thursday
5	Wednesday	21	Friday
6	Thursday	22	Saturday
7	Friday	23	Sunday
8	Saturday	24	Monday
9	Sunday	25	Tuesday
10	Monday	26	Wednesday
11	Tuesday	27	Thursday
12	Wednesday	28	Friday
13	Thursday	29	Saturday
14	Friday	30	Sunday
15	Saturday	31	Monday
16	Sunday		

